

SUPPLEMENTARY MATERIAL

From the Bottom 40 to Inequality Lines: Sharing Prosperity Globally and Domestically

Borja Lopez-Noval¹, Miguel Niño-Zarazúa², Laurence S J Roope³ and Finn Tarp⁴

Abstract

A major focus of global development policy, enshrined in the Sustainable Development Goal target 10.1, is the aim to progressively achieve and sustain income growth of the bottom 40 per cent (B40) of the population at a rate higher than the national average. We propose an alternative approach to assessing shared prosperity, using ‘inequality lines’. Analogous to poverty lines, but focused on inequality, inequality lines are benchmark incomes. Income increases below the inequality line decrease inequality; income increases above the line increase inequality. In contrast to both the B40 approach, and all widely used poverty lines, inequality lines have the advantage that they arise naturally; their location in the income distribution is directly implied by standard inequality indexes, which are underpinned by established normative principles such as the Pigou-Dalton transfer principle. Should official development assistance be used to grow or subsidise those on incomes that are low by global standards, even if this increases domestic inequality? Should instead international resources be used to reduce domestic inequality wherever it is severe, even if this means exacerbating global inequality? Using inequality lines, we investigate the extent to which there may be trade-offs between sharing prosperity domestically versus sharing prosperity globally. Using data from the World Income Inequality Database, we present the most comprehensive empirical study to date of where in the income distribution inequality lines lie in practice, and how they evolved during 1950-2020. With estimates for 208 countries in 2020, we provide the first estimates of these global inequality lines, how the global inequality line percentile has changed over time, and how it compares to domestic inequality lines. For each country, our results illuminate when income growth, subsidies or developmental interventions are likely to be equalising, with respect to both domestic and global income distributions, and where there are trade-offs between the two. We also shed light on where there are important, purely domestic, trade-offs, between reducing domestic inequality and reducing poverty.

Keywords: Benchmark incomes; global inequality; global poverty; inequality; inequality lines; poverty; shared prosperity

JEL Classification: D31; D63; O15

¹ Department of Economics, University of León. Email: borja.lopeznoval@unileon.es

² Department of Economics, SOAS University of London and UNU-WIDER. Email: mn39@soas.ac.uk

³ Health Economics Research Centre, Nuffield Department of Population Health, University of Oxford. Email: laurence.roope@dph.ox.ac.uk

⁴ Department of Economics, University of Copenhagen. Email: finn.tarp@econ.ku.dk

Supplementary Materials

Figure S1. Trends in Gini coefficient: East Asia and the Pacific

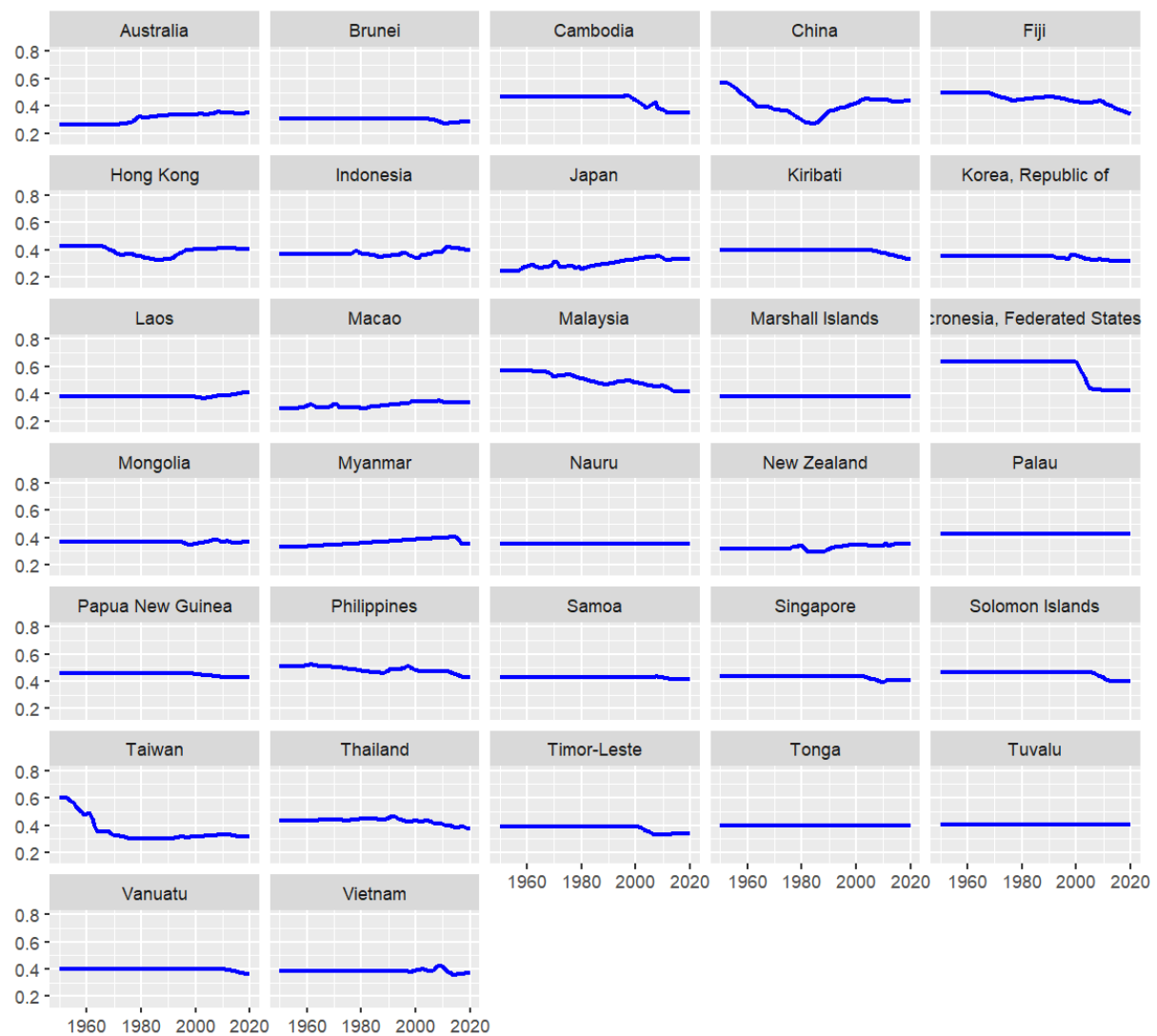


Figure S2. Trends in Gini coefficient: Europe and Central Asia

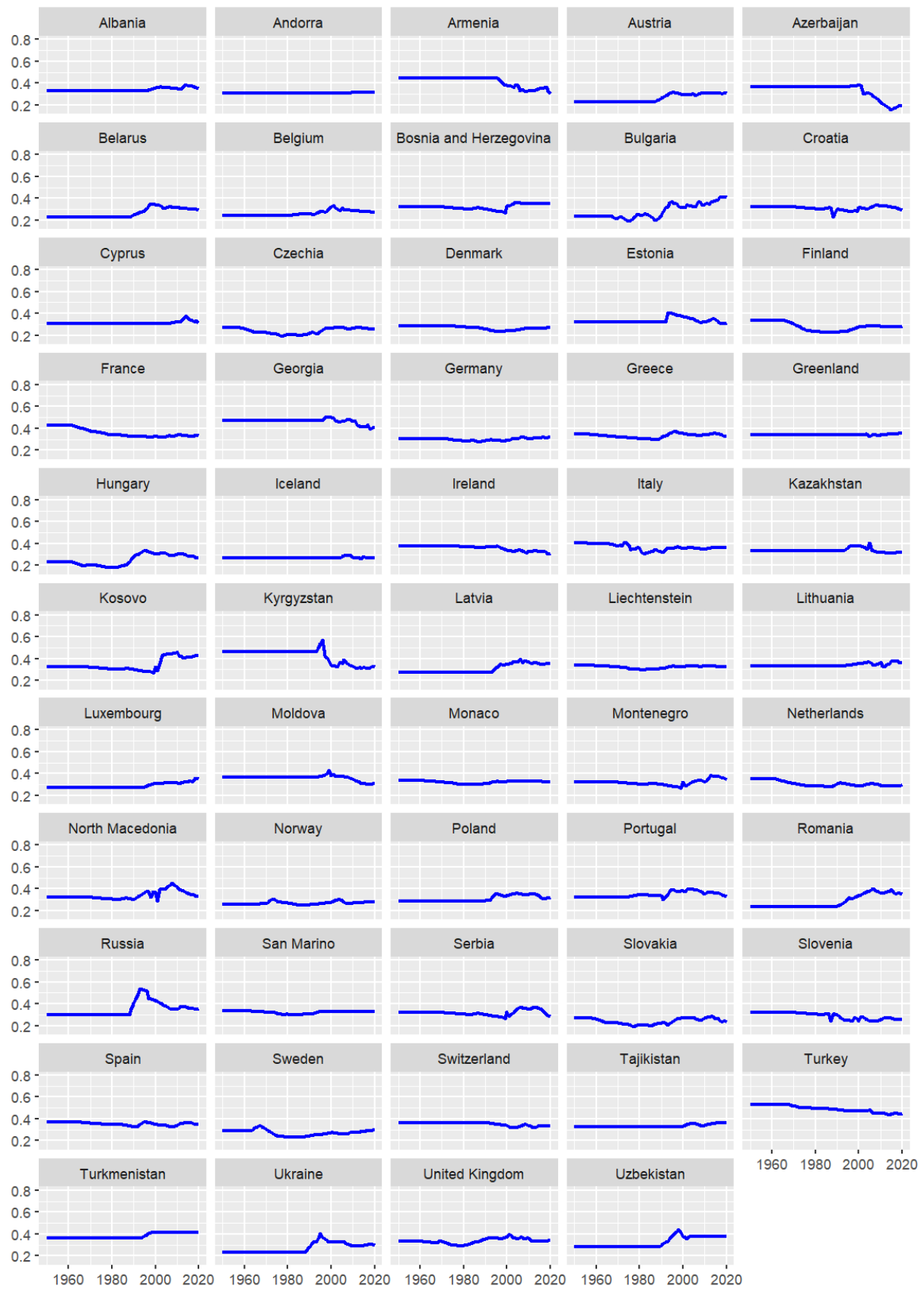


Figure S3 Trends in Gini coefficient: Latin America and Caribbean

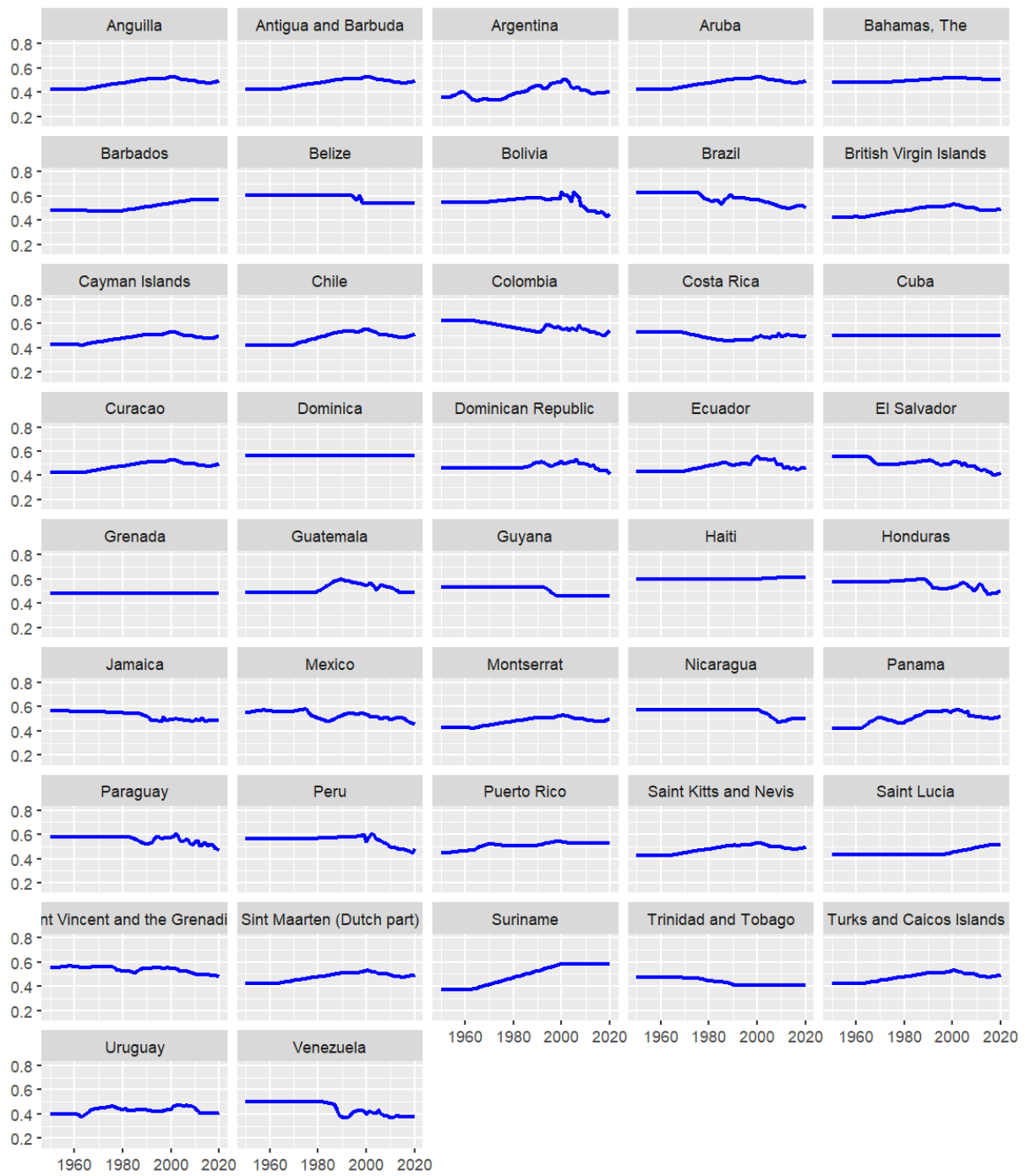


Figure S4. Trends in Gini coefficient: Middle East and North Africa

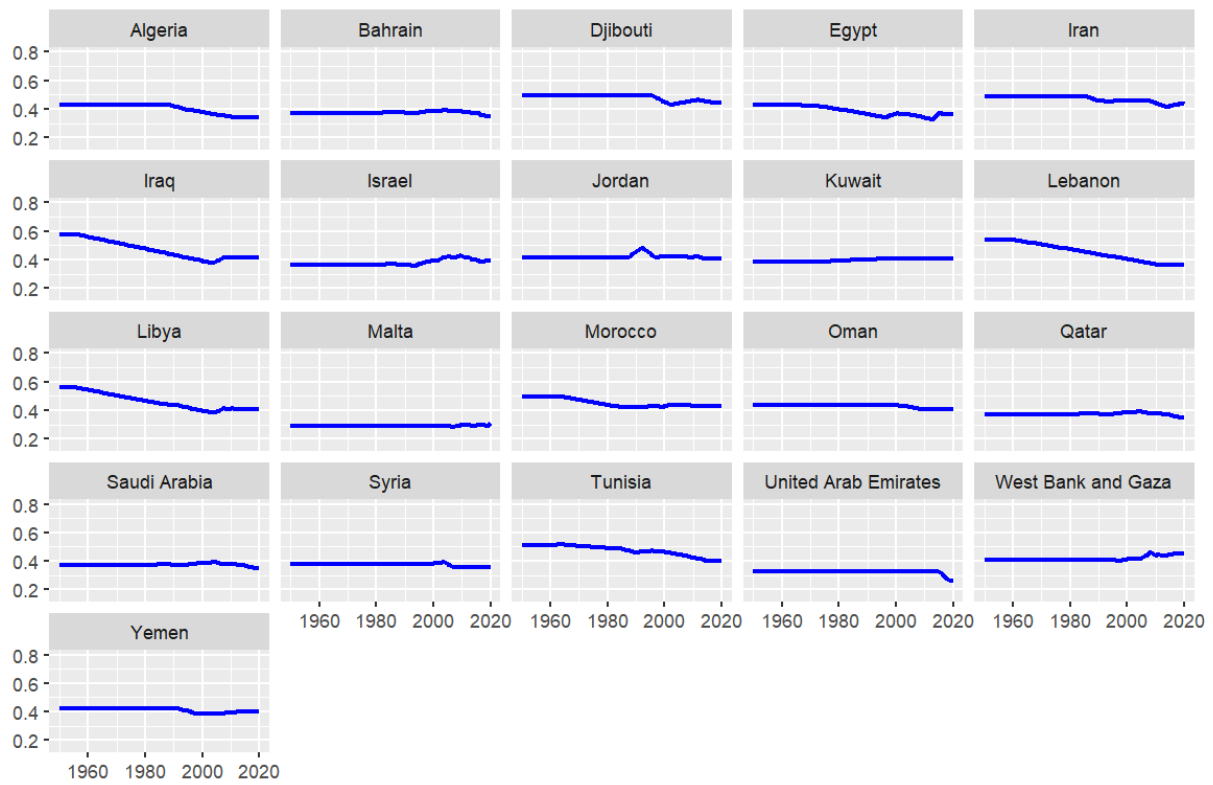


Figure S5. Trends in Gini coefficient: North America

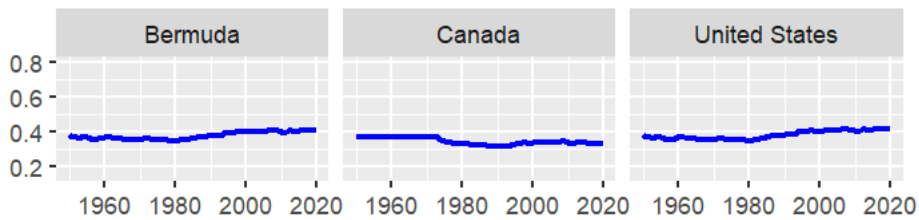


Figure S6. Trends in Gini coefficient: South Asia

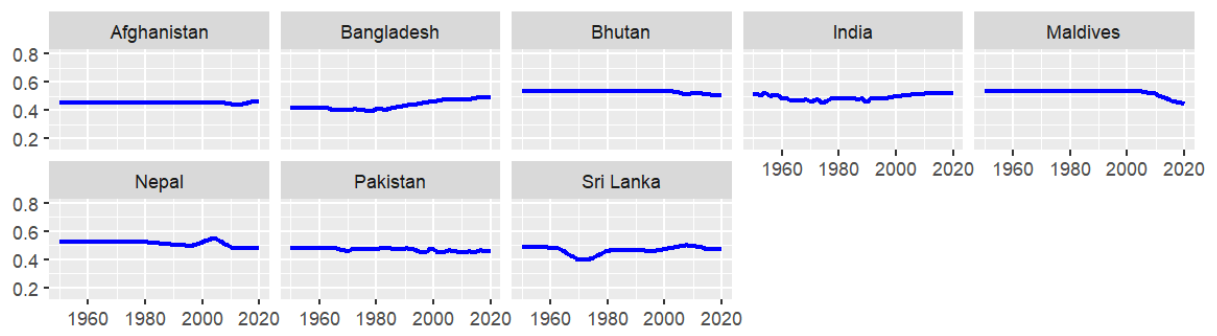


Figure S7. Trends in Gini coefficient: Sub-Saharan Africa

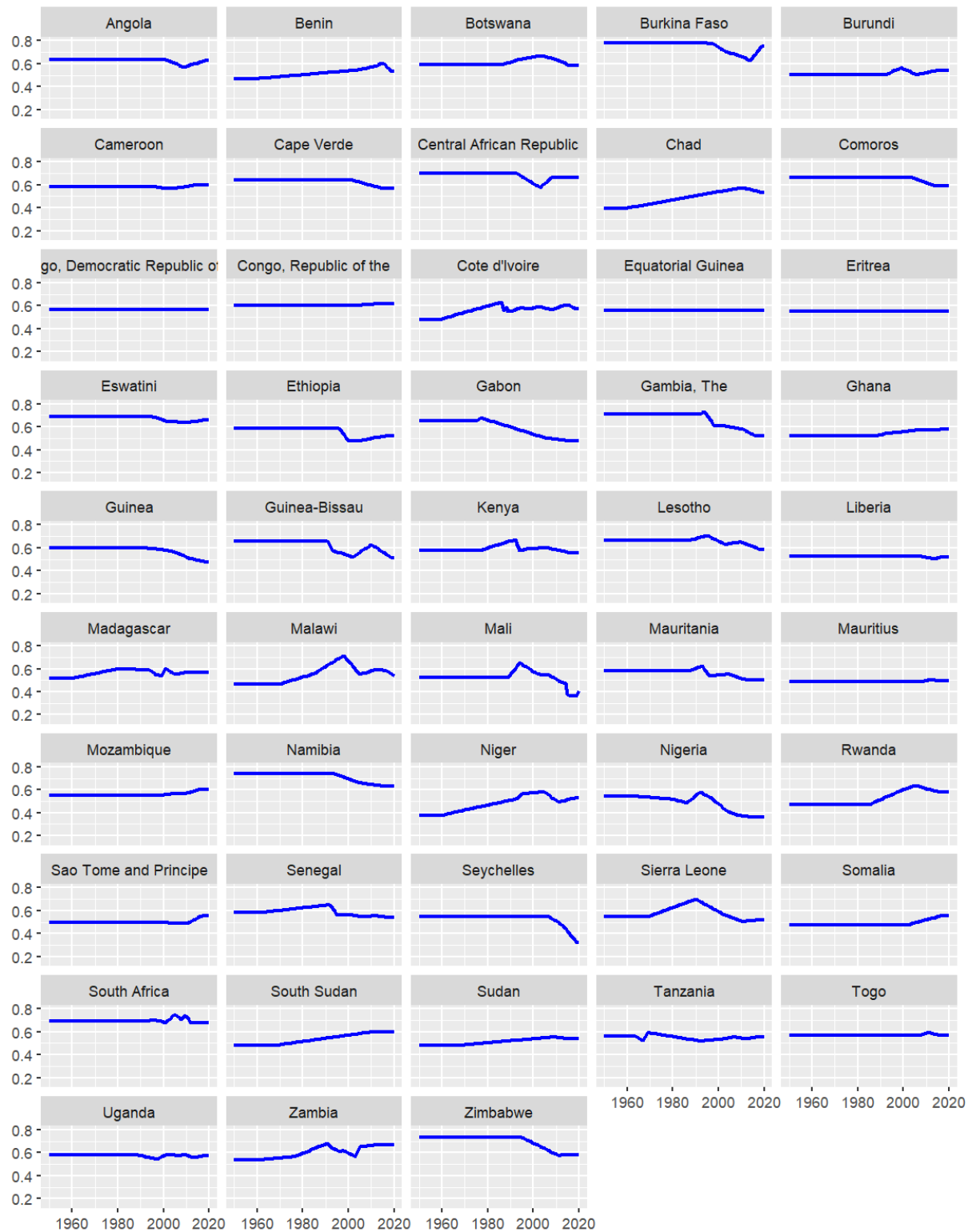


Figure S8. Global versus domestic inequality line percentiles: East Asia and Pacific

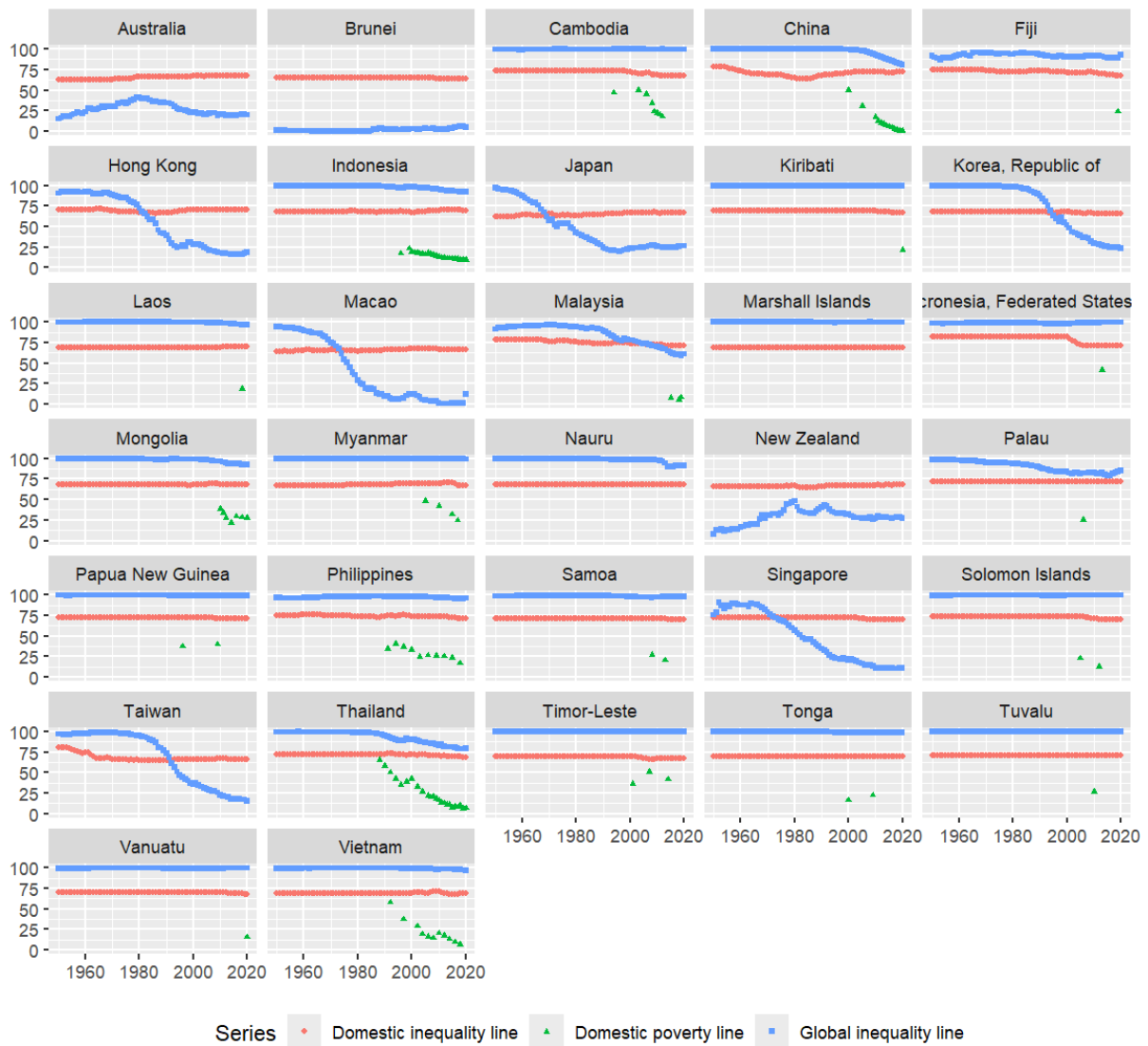


Figure S9. Global versus domestic inequality line percentiles: Europe and Central Asia



Figure S10. Global versus domestic inequality line percentiles: Latin America and the Caribbean



Figure S11. Global versus domestic inequality line percentiles: Middle East and North Africa

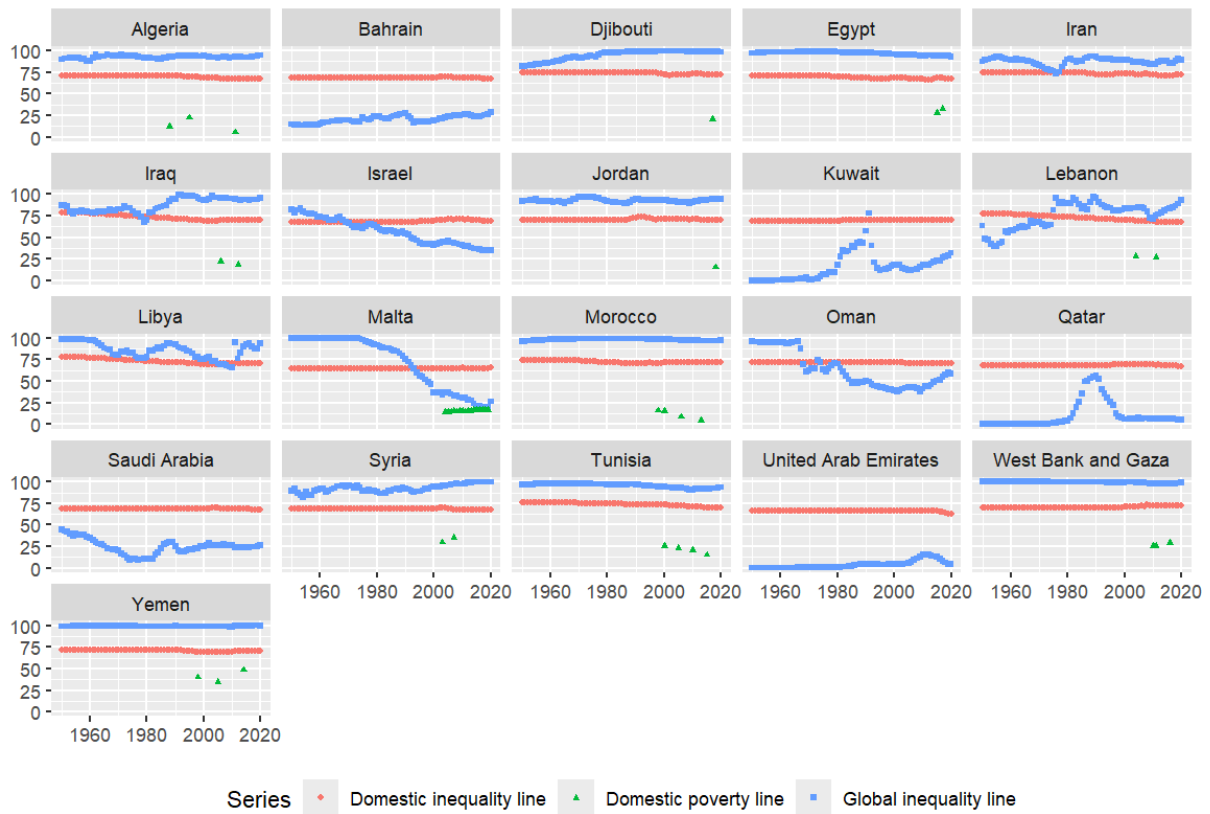


Figure S12. Global versus domestic inequality line percentiles: North America

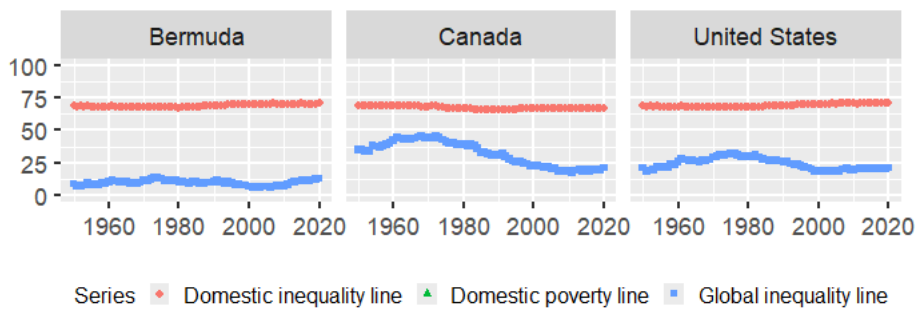


Figure S13. Global versus domestic inequality line percentiles: South Asia

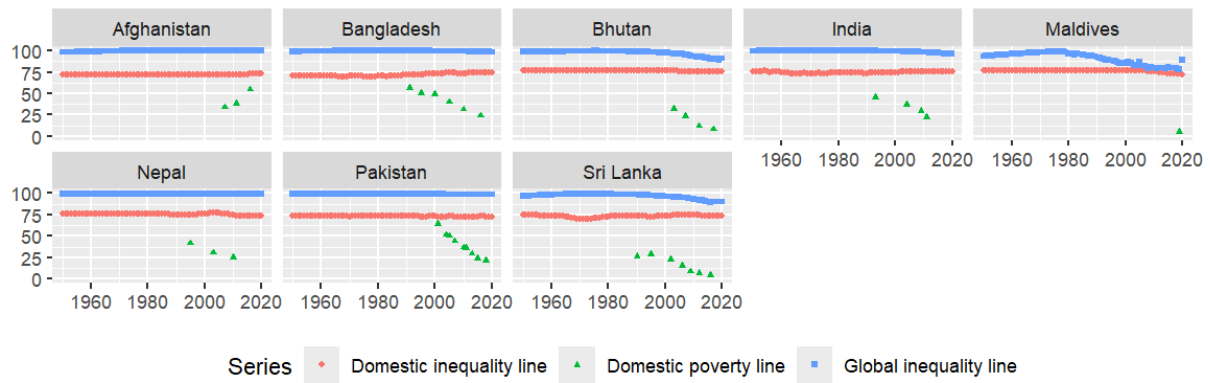


Figure S14. Global versus domestic inequality line percentiles: Sub-Saharan Africa

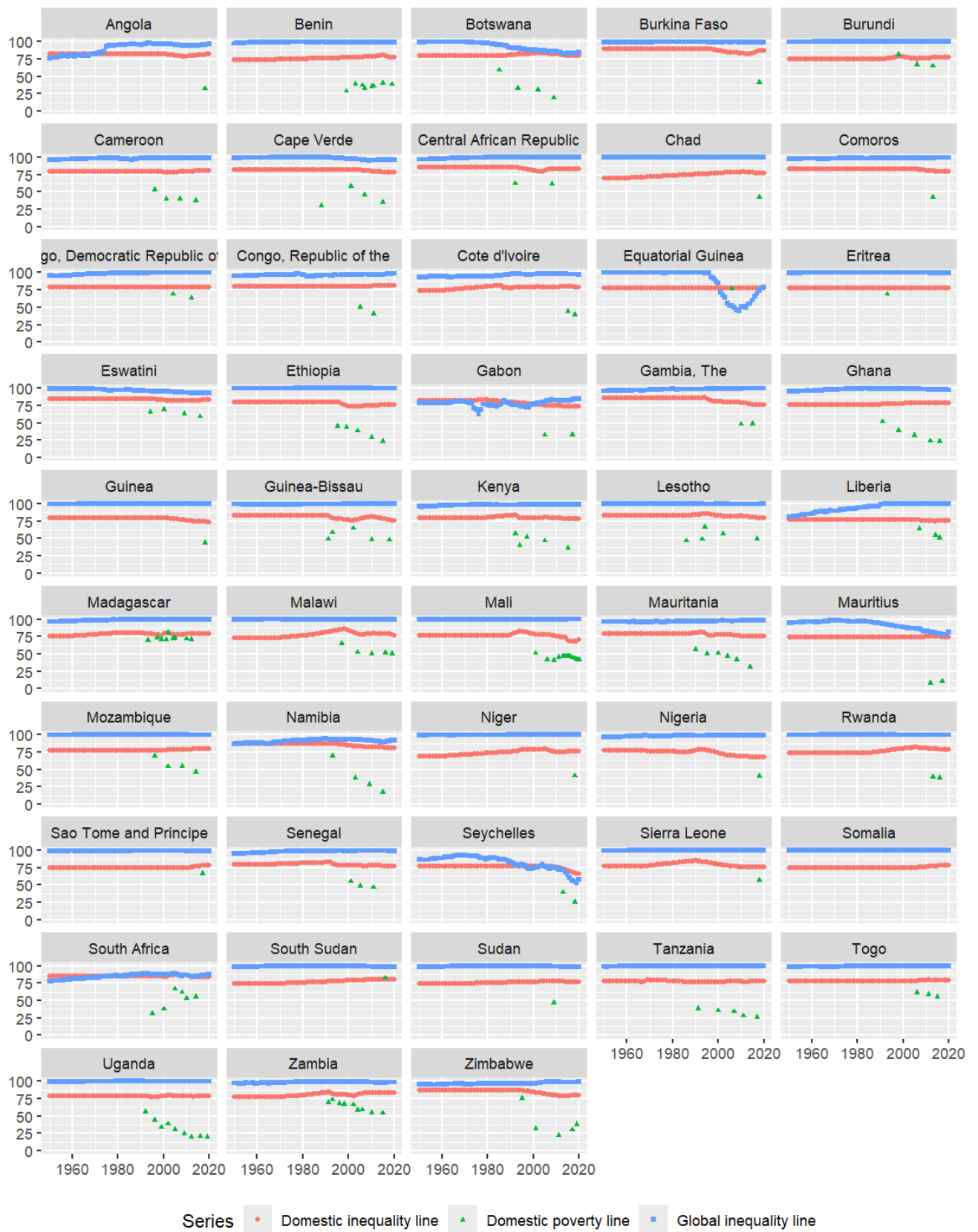


Table S1. Global and Domestic inequality line percentiles in East Asia & Pacific in 2020

Country	Domestic inequality line percentiles					Percentiles in domestic distribution where global inequality line lies					Domestic poverty line percentile
	P_G	P_{MLD}	P_{AG}	P_V	P_K	P_G	P_{MLD}	P_{AG}	P_V	P_K	
Australia	67.4	63.8	50.0	63.8	79.8	19.8	7.0	0.8	7.0	46.2	
Brunei	64.2	60.3	50.0	60.3	71.1	4.8	0.7	0.0	0.7	23.9	
Cambodia	67.6	67.4	50.0	67.4	83.3	99.6	98.6	90.6	98.6	99.9	17.7
China	71.9	64.9	50.0	64.9	79.9	80.5	64.2	30.5	64.2	92.2	-
Fiji	67.2	62.0	50.0	62.0	74.9	93.2	80.9	37.0	80.9	98.6	24.1
Hong Kong	70.4	69.7	50.0	69.7	91.4	18.4	6.9	0.9	6.9	43.3	
Indonesia	69.9	68.1	50.0	68.1	85.7	92.3	82.8	43.1	82.8	97.2	9.8
Japan	66.7	65.0	50.0	65.0	82.8	26.6	9.7	1.1	9.7	59.8	
Kiribati	66.5	65.8	50.0	65.8	81.0	100.0	99.8	98.4	99.8	100.0	21.9
Rep. of Korea	66.0	60.3	50.0	60.3	74.9	23.5	9.8	1.5	9.8	52.1	
Laos	70.6	69.7	50.0	69.7	89.4	96.4	92.2	68.1	92.2	98.8	18.3
Macao	66.8	63.9	50.0	63.9	80.7	11.7	3.7	0.4	3.7	33.0	
Malaysia	70.7	66.8	50.0	66.8	83.0	61.1	40.0	9.1	40.0	81.5	8.4
Marshall Islands	69.0	63.8	50.0	63.8	78.3	99.8	99.1	90.4	99.1	100.0	
Micronesia	71.0	66.9	50.0	66.9	85.8	99.6	98.9	93.1	98.9	99.9	41.2
Mongolia	68.3	66.4	50.0	66.4	83.1	92.6	82.1	38.0	82.1	97.6	27.8
Myanmar	67.6	67.8	50.0	67.8	85.6	99.3	98.0	87.5	98.0	99.7	24.8
Nauru	67.7	67.1	50.0	67.1	86.3	90.9	77.3	25.1	77.3	96.8	
New Zealand	67.7	65.0	50.0	65.0	81.1	27.1	10.1	0.8	10.1	56.6	
Palau	71.4	70.0	50.0	70.0	88.5	85.5	71.6	29.9	71.6	93.8	24.9
Papua New Guinea	71.7	67.1	50.0	67.1	86.7	99.3	98.1	89.4	98.1	99.8	39.9
Philippines	71.4	69.5	50.0	69.5	87.6	96.0	91.1	67.1	91.1	98.6	16.7
Samoa	70.6	69.7	50.0	69.7	90.4	97.8	94.9	77.5	94.9	99.2	20.3
Singapore	70.4	62.6	50.0	62.6	81.7	10.9	5.8	1.8	5.8	20.8	
Solomon Islands	70.0	68.3	50.0	68.3	87.7	99.8	99.5	96.8	99.5	99.9	12.7
Taiwan	66.0	63.7	50.0	63.7	77.8	15.2	3.5	0.1	3.5	43.1	
Thailand	68.8	63.4	50.0	63.4	77.3	79.6	59.5	20.2	59.5	92.9	6.8
Timor-Leste	66.8	67.1	50.0	67.1	83.8	99.7	99.0	92.5	99.0	99.9	41.8
Tonga	69.8	65.4	50.0	65.4	82.0	98.4	95.1	74.4	95.1	99.6	22.5
Tuvalu	70.3	65.8	50.0	65.8	82.8	99.4	98.1	87.4	98.1	99.9	26.3
Vanuatu	68.1	64.9	50.0	64.9	82.0	99.9	99.6	96.3	99.6	100.0	15.9
Vietnam	68.4	64.2	50.0	64.2	81.0	97.1	91.9	59.3	91.9	99.3	6.7

Table S2. Global and Domestic inequality line percentiles in Europe and Central Asia in 2020

Country	Domestic inequality line percentiles					Percentiles in domestic distribution where global inequality line lies					Domestic poverty line percentile
	p_G	p_{MLD}	p_{AG}	p_V	p_K	p_G	p_{MLD}	p_{AG}	p_V	p_K	
Albania	67.5	60.8	50.0	60.8	74.7	89.9	73.3	28.7	73.3	97.6	21.8
Andorra	65.7	63.4	50.0	63.4	76.0	23.7	5.8	0.1	5.8	55.6	
Armenia	64.9	61.2	50.0	61.2	73.4	93.0	78.1	25.0	78.1	98.7	27.0
Austria	65.3	60.0	50.0	60.0	73.4	13.8	4.7	0.5	4.7	36.9	14.7
Azerbaijan	59.8	60.5	50.0	60.5	69.4	95.4	77.9	3.9	77.9	99.5	6.0
Belarus	64.6	60.4	50.0	60.4	72.1	76.5	47.4	6.7	47.4	93.9	4.8
Belgium	63.7	60.2	50.0	60.2	73.8	11.5	3.3	0.4	3.3	37.7	13.1
Bosnia and Herzegovina	67.7	60.7	50.0	60.7	75.7	87.2	68.0	24.5	68.0	96.6	16.9
Bulgaria	70.4	67.3	50.0	67.3	88.5	70.9	46.7	12.9	46.7	88.3	22.1
Croatia	64.6	58.4	50.0	58.4	71.3	48.9	23.0	3.5	23.0	82.6	18.3
Cyprus	65.8	64.7	50.0	64.7	80.1	29.8	9.2	0.4	9.2	64.8	14.3
Czechia	62.9	61.7	50.0	61.7	73.8	20.2	3.7	0.1	3.7	59.9	8.6
Denmark	63.4	60.8	50.0	60.8	74.0	6.4	1.6	0.2	1.6	26.5	12.3
Estonia	65.6	60.9	50.0	60.9	72.3	35.0	14.1	0.7	14.1	65.9	20.6
Finland	64.1	62.3	50.0	62.3	76.0	12.5	2.9	0.2	2.9	42.5	10.8
France	66.7	61.5	50.0	61.5	79.0	24.3	11.2	2.2	11.2	53.0	13.8
Georgia	70.3	64.4	50.0	64.4	82.0	87.3	71.8	31.8	71.8	95.7	21.3
Germany	66.1	63.1	50.0	63.1	78.9	14.3	4.6	0.5	4.6	39.4	15.8
Greece	66.4	60.9	50.0	60.9	75.6	52.6	27.1	4.8	27.1	81.8	19.6
Greenland	67.9	62.5	50.0	62.5	77.3	16.9	6.5	0.8	6.5	38.5	
Hungary	63.5	60.2	50.0	60.2	72.6	37.7	12.9	0.8	12.9	76.3	12.7
Iceland	63.2	62.0	50.0	62.0	75.4	6.8	1.4	0.1	1.4	31.7	8.8
Ireland	65.6	64.6	50.0	64.6	79.3	0.9	0.2	0.0	0.2	7.6	12.9
Italy	68.1	59.5	50.0	59.5	74.2	32.6	17.9	4.8	17.9	57.5	20.1
Kazakhstan	65.9	63.1	50.0	63.1	75.7	59.0	31.7	2.3	31.7	84.6	5.3
Kosovo	71.4	62.1	50.0	62.1	81.2	92.8	81.8	43.9	81.8	97.9	17.6
Kyrgyzstan	66.2	62.8	50.0	62.8	76.4	99.7	98.8	87.6	98.8	100.0	25.3
Latvia	67.5	63.6	50.0	63.6	79.8	48.1	24.4	3.5	24.4	77.1	23.4
Liechtenstein	66.3	61.3	50.0	61.3	76.9	22.8	9.3	1.4	9.3	51.4	
Lithuania	67.9	63.8	50.0	63.8	80.6	35.3	16.4	2.5	16.4	64.8	20.9
Luxembourg	67.6	62.3	50.0	62.3	76.0	2.2	0.5	0.1	0.5	8.8	17.4
Moldova	65.3	61.4	50.0	61.4	73.7	93.2	79.1	27.4	79.1	98.7	26.8
Monaco	66.3	61.3	50.0	61.3	76.9	22.8	9.3	1.4	9.3	51.4	
Montenegro	67.4	59.8	50.0	59.8	74.0	77.0	52.3	16.0	52.3	93.5	22.6
Netherlands	64.9	62.7	50.0	62.7	78.5	9.6	3.0	0.4	3.0	32.0	14.4
North Macedonia	66.6	57.4	50.0	57.4	70.3	83.4	58.4	19.6	58.4	96.5	21.6
Norway	63.9	59.7	50.0	59.7	74.3	5.8	2.0	0.3	2.0	19.7	12.7
Poland	66.1	60.4	50.0	60.4	79.0	36.9	17.9	3.8	17.9	73.1	14.8
Portugal	66.6	63.9	50.0	63.9	80.6	42.1	18.5	2.3	18.5	74.9	16.2
Romania	67.7	57.8	50.0	57.8	72.5	46.4	27.2	8.9	27.2	75.7	22.6
Russia	67.7	63.4	50.0	63.4	77.8	57.1	32.8	4.9	32.8	82.1	12.1
San Marino	66.3	61.3	50.0	61.3	76.9	10.7	3.8	0.6	3.8	28.5	
Serbia	64.2	58.5	50.0	58.5	71.0	79.7	48.9	8.9	48.9	95.7	21.7
Slovakia	61.7	55.0	50.0	55.0	65.1	32.7	11.8	1.4	11.8	77.3	11.4
Slovenia	62.7	59.5	50.0	59.5	71.1	22.5	5.7	0.4	5.7	61.4	11.7
Spain	67.4	59.6	50.0	59.6	74.6	34.5	18.0	4.4	18.0	62.4	21.7
Sweden	64.7	60.4	50.0	60.4	74.3	12.5	3.8	0.4	3.8	36.9	15.7
Switzerland	66.9	63.2	50.0	63.2	78.5	7.5	2.3	0.3	2.3	23.8	15.5
Tajikistan	68.2	62.7	50.0	62.7	77.8	99.9	99.4	92.9	99.4	100.0	26.3

Turkey	72.6	69.8	50.0	69.8	92.0	60.4	38.9	10.1	38.9	81.1	15.0
Turkmenistan	70.7	65.7	50.0	65.7	82.8	84.0	67.6	28.3	67.6	94.0	
Ukraine	65.0	61.2	50.0	61.2	74.0	93.5	79.4	25.9	79.4	98.7	1.4
United Kingdom	67.0	62.6	50.0	62.6	77.4	26.1	10.4	1.1	10.4	54.7	18.6
Uzbekistan	68.7	64.8	50.0	64.8	82.5	97.8	93.8	67.0	93.8	99.4	14.1

Table S3. Global and Domestic inequality line percentiles in Latin America and the Caribbean in 2020

Country	Domestic inequality line percentiles					Percentiles in domestic distribution where global inequality line lies					Domestic poverty line percentile
	p_G	p_{MLD}	p_{AG}	p_V	p_K	p_G	p_{MLD}	p_{AG}	p_V	p_K	
Anguilla	74.8	70.5	50.0	70.5	92.1	66.3	47.5	17.6	47.5	82.7	
Antigua and Barbuda	74.8	70.5	50.0	70.5	92.1	81.7	67.2	32.6	67.2	91.6	
Argentina	70.2	66.5	50.0	66.5	83.5	75.8	55.3	17.2	55.3	90.1	42.0
Aruba	74.8	70.5	50.0	70.5	92.1	48.8	31.2	8.9	31.2	69.7	
Bahamas, The	75.4	69.6	50.0	69.6	92.1	57.8	40.4	16.0	40.4	77.0	
Barbados	78.6	72.8	50.0	72.8	96.8	89.2	80.4	52.2	80.4	94.8	
Belize	77.0	72.5	50.0	72.5	96.3	96.9	93.9	79.8	93.9	98.7	
Bolivia	72.6	65.7	50.0	65.7	83.6	96.1	90.2	63.9	90.2	98.9	39.0
Brazil	75.2	69.1	50.0	69.1	93.5	87.2	74.6	40.0	74.6	94.5	
British Virgin Islands	74.8	70.5	50.0	70.5	92.1	46.8	29.2	8.1	29.2	68.1	
Cayman Islands	74.8	70.5	50.0	70.5	92.1	23.9	12.5	2.5	12.5	42.5	
Chile	75.6	71.5	50.0	71.5	93.9	72.2	55.0	22.6	55.0	86.0	10.8
Colombia	77.3	71.1	50.0	71.1	94.0	87.3	77.2	47.4	77.2	94.1	42.5
Costa Rica	74.7	69.2	50.0	69.2	86.8	75.7	59.9	28.3	59.9	87.8	30.0
Cuba	75.0	72.9	50.0	72.9	93.9	93.9	88.4	65.2	88.4	97.3	
Curacao	74.8	70.5	50.0	70.5	92.1	76.5	59.6	26.1	59.6	88.7	
Dominica	78.3	72.8	50.0	72.8	96.4	92.1	85.4	60.5	85.4	96.3	
Dominican Republic	70.5	67.2	50.0	67.2	84.3	81.8	64.2	23.4	64.2	92.8	21.0
Ecuador	73.6	70.8	50.0	70.8	93.0	93.1	85.8	55.3	85.8	97.1	33.0
El Salvador	71.4	66.6	50.0	66.6	86.6	96.4	91.3	63.4	91.3	98.8	26.2
Grenada	74.1	70.2	50.0	70.2	89.4	85.9	73.9	39.8	73.9	93.6	
Guatemala	74.4	71.0	50.0	71.0	93.0	95.0	89.8	66.3	89.8	98.0	59.3
Guyana	72.8	67.9	50.0	67.9	91.1	78.8	59.4	24.2	59.4	91.3	
Haiti	80.7	73.9	50.0	73.9	96.2	99.0	97.8	92.4	97.8	99.6	58.5
Honduras	74.7	68.3	50.0	68.3	86.9	98.3	95.4	81.7	95.4	99.5	48.0
Jamaica	74.2	69.2	50.0	69.2	91.2	94.6	88.6	61.9	88.6	98.0	19.9
Mexico	72.9	69.7	50.0	69.7	91.0	81.0	64.6	26.2	64.6	91.8	43.9
Montserrat	74.8	70.5	50.0	70.5	92.1	76.0	58.9	25.5	58.9	88.4	
Nicaragua	75.1	71.7	50.0	71.7	95.6	98.0	95.8	84.3	95.8	99.2	24.9
Panama	75.7	69.1	50.0	69.1	89.2	66.5	49.8	22.6	49.8	82.1	21.5
Paraguay	73.6	68.2	50.0	68.2	87.4	89.1	78.3	44.5	78.3	95.6	26.9
Peru	74.2	66.4	50.0	66.4	87.7	90.9	80.7	47.7	80.7	96.5	30.1
Puerto Rico	76.4	69.4	50.0	69.4	90.3	55.7	40.0	17.6	40.0	73.3	
Saint Kitts and Nevis	74.8	70.5	50.0	70.5	92.1	69.5	51.4	19.7	51.4	84.7	
Saint Lucia	75.8	69.6	50.0	69.6	91.2	89.3	79.6	49.4	79.6	95.3	25.0
Saint Vincent and the Grenadines	74.2	69.3	50.0	69.3	91.7	90.2	80.5	46.5	80.5	95.9	
Sint Maarten (Dutch part)	74.8	70.5	50.0	70.5	92.1	51.4	33.2	9.7	33.2	71.7	
Suriname	79.0	69.4	50.0	69.4	91.9	81.7	69.6	43.7	69.6	91.1	
Trinidad and Tobago	70.3	64.6	50.0	64.6	81.1	65.0	43.1	13.1	43.1	84.7	
Turks and Caicos Islands	74.8	70.5	50.0	70.5	92.1	75.0	57.8	24.7	57.8	87.8	
Uruguay	70.6	65.8	50.0	65.8	81.5	70.7	50.3	15.7	50.3	87.2	11.6

Venezuela	68.9	64.0	50.0	64.0	78.9	97.4	92.2	62.4	92.2	99.5	33.1
-----------	------	------	------	------	------	------	------	------	------	------	------

Table S4. Global and Domestic inequality line percentiles in Middle East and North Africa in 2020

Country	Domestic inequality line percentiles					Percentiles in domestic distribution where global inequality line lies					Domestic poverty line percentile
	p_G	p_{MLD}	p_{AG}	p_V	p_K	p_G	p_{MLD}	p_{AG}	p_V	p_K	
Algeria	67.0	64.2	50.0	64.2	78.4	94.6	84.9	40.7	84.9	98.7	5.5
Bahrain	67.5	61.3	50.0	61.3	74.7	29.1	13.4	1.6	13.4	55.8	
Djibouti	72.2	67.2	50.0	67.2	88.5	98.5	96.0	81.3	96.0	99.5	21.1
Egypt	68.0	70.0	50.0	70.0	89.6	93.1	84.0	35.7	84.0	97.4	32.5
Iran	71.9	67.3	50.0	67.3	85.5	89.3	77.7	40.8	77.7	95.9	
Iraq	70.7	67.2	50.0	67.2	88.6	95.6	89.6	56.5	89.6	98.5	18.9
Israel	69.5	61.3	50.0	61.3	77.4	35.3	20.3	5.9	20.3	59.3	
Jordan	70.3	67.1	50.0	67.1	85.8	94.5	87.0	52.0	87.0	98.2	15.7
Kuwait	70.5	63.1	50.0	63.1	78.1	32.3	18.1	4.5	18.1	54.1	
Lebanon	68.1	64.6	50.0	64.6	82.7	93.5	82.8	36.9	82.8	98.0	27.4
Libya	70.3	67.0	50.0	67.0	87.4	94.2	86.3	47.8	86.3	98.0	
Malta	65.7	63.0	50.0	63.0	78.2	26.6	9.2	0.8	9.2	59.8	16.9
Morocco	71.4	68.4	50.0	68.4	87.7	97.2	93.5	72.5	93.5	99.1	4.8
Oman	70.2	66.2	50.0	66.2	83.0	58.3	36.8	7.8	36.8	80.6	
Qatar	67.5	61.3	50.0	61.3	74.7	5.8	1.8	0.2	1.8	17.6	
Saudi Arabia	67.5	61.3	50.0	61.3	74.7	26.0	11.5	1.4	11.5	51.7	
Syria	67.9	66.1	50.0	66.1	82.5	99.7	99.0	92.2	99.0	99.9	35.2
Tunisia	70.0	66.3	50.0	66.3	82.8	93.7	85.1	49.0	85.1	98.1	15.2
United Arab Emirates	63.1	57.0	50.0	57.0	66.3	4.8	1.0	0.1	1.0	20.7	
West Bank and Gaza	72.6	64.3	50.0	64.3	80.6	98.8	95.8	78.5	95.8	99.7	29.2
Yemen	70.1	67.2	50.0	67.2	85.8	99.8	99.5	96.6	99.5	100.0	48.6

Table S5. Global and Domestic inequality line percentiles in North America in 2020

Country	Domestic inequality line percentiles					Percentiles in domestic distribution where global inequality line lies					Domestic poverty line percentile
	p_G	p_{MLD}	p_{AG}	p_V	p_K	p_G	p_{MLD}	p_{AG}	p_V	p_K	
Bermuda	70.5	64.9	50.0	64.9	82.1	12.8	5.4	0.9	5.4	27.8	
Canada	66.4	61.3	50.0	61.3	75.7	21.0	8.1	0.9	8.1	47.6	
United States	71.0	65.2	50.0	65.2	82.7	21.0	10.2	2.0	10.2	40.2	

Table S6. Global and Domestic inequality line percentiles in South Asia in 2020

Country	Domestic inequality line percentiles					Percentiles in domestic distribution where global inequality line lies					Domestic poverty line percentile
	p_G	p_{MLD}	p_{AG}	p_V	p_K	p_G	p_{MLD}	p_{AG}	p_V	p_K	
Afghanistan	72.9	69.6	50.0	69.6	87.7	99.9	99.6	97.4	99.6	100.0	54.5
Bangladesh	74.6	71.4	50.0	71.4	95.4	98.4	96.4	86.4	96.4	99.3	24.3
Bhutan	75.4	69.0	50.0	69.0	86.4	90.9	82.4	55.6	82.4	96.2	8.2
India	76.0	71.3	50.0	71.3	92.1	96.8	93.4	78.1	93.4	98.8	21.9
Maldives	72.4	68.7	50.0	68.7	86.2	88.8	77.8	42.4	77.8	95.4	5.4
Nepal	73.8	69.9	50.0	69.9	88.6	99.1	97.7	89.7	97.7	99.7	25.2
Pakistan	72.7	70.9	50.0	70.9	90.3	98.7	96.8	87.1	96.8	99.6	21.9
Sri Lanka	73.5	70.5	50.0	70.5	92.7	90.0	80.1	44.1	80.1	95.8	4.1

Table S7. Global and Domestic inequality line percentiles in sub-Saharan Africa in 2020

Country	Domestic inequality line percentiles					Percentiles in domestic distribution where global inequality line lies					Domestic poverty line percentile
	p_G	p_{MLD}	p_{AG}	p_V	p_K	p_G	p_{MLD}	p_{AG}	p_V	p_K	
Angola	81.5	74.5	50.0	74.5	98.1	96.3	93.2	80.3	93.2	98.3	32.3
Benin	76.9	73.3	50.0	73.3	95.8	99.0	97.8	92.2	97.8	99.6	38.5
Botswana	79.4	72.6	50.0	72.6	91.9	84.6	75.2	50.1	75.2	91.9	19.3
Burkina Faso	87.5	78.7	50.0	78.7	96.5	98.8	97.7	93.8	97.7	99.5	41.4
Burundi	77.1	73.5	50.0	73.5	95.7	99.9	99.9	99.5	99.9	100.0	64.9
Cameroon	80.0	72.8	50.0	72.8	96.5	98.6	97.0	89.9	97.0	99.4	37.5
Cape Verde	78.5	72.9	50.0	72.9	95.6	96.5	93.5	79.6	93.5	98.6	35.0
Central African Republic	83.2	76.9	50.0	76.9	99.0	99.8	99.6	98.8	99.6	99.9	62.0
Chad	76.7	72.8	50.0	72.8	94.3	99.8	99.6	98.0	99.6	99.9	42.3
Comoros	79.5	72.4	50.0	72.4	96.3	99.1	98.1	92.8	98.1	99.6	42.4
Congo, Democratic Republic of the	78.3	72.3	50.0	72.3	94.6	99.9	99.7	98.9	99.7	100.0	63.9
Congo, Republic of the	80.8	74.2	50.0	74.2	98.0	98.7	97.4	91.3	97.4	99.4	40.9
Cote d'Ivoire	78.5	74.1	50.0	74.1	96.4	97.4	94.9	84.3	94.9	98.9	39.5
Equatorial Guinea	78.1	68.3	50.0	68.3	88.8	78.9	66.0	40.5	66.0	89.6	76.8
Eritrea	77.6	72.6	50.0	72.6	92.6	99.5	98.9	95.1	98.9	99.8	69.0
Eswatini	82.8	75.6	50.0	75.6	95.8	92.8	87.9	72.3	87.9	96.3	58.9
Ethiopia	75.9	73.0	50.0	73.0	96.4	99.6	99.1	96.1	99.1	99.8	23.5
Gabon	73.7	67.8	50.0	67.8	84.4	84.8	72.2	39.5	72.2	93.5	33.4
Gambia, The	76.1	72.7	50.0	72.7	95.1	99.6	99.1	96.3	99.1	99.9	48.6
Ghana	78.9	72.1	50.0	72.1	96.4	97.3	94.6	82.2	94.6	98.8	23.4
Guinea	73.8	70.8	50.0	70.8	92.1	99.6	99.0	95.1	99.0	99.9	43.7
Guinea-Bissau	75.6	72.4	50.0	72.4	93.2	99.7	99.4	97.2	99.4	99.9	47.7
Kenya	77.9	73.1	50.0	73.1	95.9	98.3	96.3	87.6	96.3	99.3	36.1
Lesotho	79.4	72.0	50.0	72.0	95.7	99.5	98.8	95.2	98.8	99.7	49.7
Liberia	75.8	71.6	50.0	71.6	93.1	99.9	99.7	98.5	99.7	100.0	50.9
Madagascar	78.5	73.5	50.0	73.5	95.8	99.7	99.5	97.9	99.5	99.9	70.7
Malawi	77.1	73.4	50.0	73.4	95.3	99.8	99.5	98.0	99.5	99.9	50.7
Mali	70.4	67.0	50.0	67.0	87.9	99.9	99.6	97.6	99.6	100.0	41.9
Mauritania	75.0	71.4	50.0	71.4	94.6	98.1	95.9	84.6	95.9	99.2	31.0
Mauritius	74.6	74.8	50.0	74.8	96.4	81.3	66.8	25.2	66.8	90.9	10.3
Mozambique	80.0	76.0	50.0	76.0	98.6	99.7	99.6	98.5	99.6	99.9	46.1
Namibia	81.5	74.2	50.0	74.2	93.6	92.2	86.7	69.8	86.7	96.1	17.4
Niger	76.6	74.4	50.0	74.4	96.4	99.9	99.7	98.6	99.7	99.9	40.8
Nigeria	68.0	65.8	50.0	65.8	80.5	99.4	97.8	85.4	97.8	99.9	40.1
Rwanda	78.9	74.9	50.0	74.9	96.8	99.5	98.9	95.9	98.9	99.7	38.2
Sao Tome and Principe	78.0	74.4	50.0	74.4	97.4	98.5	96.9	89.6	96.9	99.3	66.7
Senegal	77.0	73.7	50.0	73.7	96.3	99.0	97.8	92.2	97.8	99.6	46.7
Seychelles	66.2	59.3	50.0	59.3	72.8	58.0	32.5	6.9	32.5	85.6	25.3
Sierra Leone	76.0	73.7	50.0	73.7	95.3	99.7	99.5	97.7	99.5	99.9	56.8
Somalia	77.7	70.8	50.0	70.8	94.0	99.9	99.9	99.3	99.9	100.0	
South Africa	83.9	76.1	50.0	76.1	94.9	87.3	80.7	62.2	80.7	92.8	55.5
South Sudan	79.8	71.1	50.0	71.1	94.6	98.5	96.4	87.5	96.4	99.4	82.3
Sudan	77.1	75.0	50.0	75.0	97.5	98.5	97.0	90.1	97.0	99.3	46.5
Tanzania	77.9	74.9	50.0	74.9	97.1	99.3	98.5	94.6	98.5	99.7	26.4

Togo	78.4	73.0	50.0	73.0	95.0	99.6	99.0	95.9	99.0	99.8	55.1
Uganda	78.5	74.4	50.0	74.4	96.8	99.5	98.9	95.8	98.9	99.7	20.3
Zambia	83.6	75.4	50.0	75.4	97.6	98.5	97.0	90.9	97.0	99.3	54.4
Zimbabwe	79.2	74.2	50.0	74.2	94.9	98.7	97.3	91.1	97.3	99.5	38.3

Table S8. Inequality line incomes and percentiles of the income distribution in East Asia and the Pacific

Year	Inequality measures					Inequality line incomes					Inequality line percentiles					Poverty percentile (US\$2.15 & US\$3.65)	
	I_G	I_{MLD}	I_{AG}	I_V	I_K	B_G	B_{MLD}	B_{AG}	B_V	B_K	p_G	p_{MLD}	p_{AG}	p_V	p_K	$p_{2.15}$	$p_{3.65}$
1950	0.68	0.98	745	6	5,549	1,823	1,089	365	1,089	3,863	84.2	75.9	50	75.9	94.5	-	-
1955	0.66	0.89	935	8	5,885	2,159	1,407	512	1,407	4,350	83.2	76.3	50	76.3	92.4	-	-
1960	0.68	0.92	1,126	13	7,644	2,339	1,648	542	1,648	5,470	84.2	79.1	50	79.1	92.3	-	-
1965	0.69	0.92	1,436	21	10,007	2,572	2,082	666	2,082	7,085	84.5	81.7	50	81.7	91.5	-	-
1970	0.73	1.05	2,023	48	17,335	3,615	2,782	746	2,782	11,449	86.4	83.9	50	83.9	92.9	-	-
1975	0.72	1.05	2,315	59	18,519	4,367	3,193	828	3,193	12,452	86.2	83.0	50	83.0	92.3	-	-
1980	0.71	0.98	2,702	76	19,981	5,026	3,804	1,034	3,804	13,795	85.5	82.7	50	82.7	91.7	83.4	94.1
1985	0.68	0.88	2,989	93	21,296	4,685	4,370	1,394	4,370	15,018	84.2	83.5	50	83.5	91.9	71.0	91.4
1990	0.70	0.98	3,683	138	26,388	6,606	5,226	1,605	5,226	18,420	85.2	82.9	50	82.9	92.2	65.8	87.3
1995	0.66	0.81	4,237	173	26,801	7,427	6,442	2,424	6,442	19,843	82.9	80.8	50	80.8	91.6	50.0	77.1
2000	0.63	0.73	4,675	201	27,014	8,323	7,449	3,182	7,449	20,956	81.4	79.3	50	79.3	91.3	39.5	67.6
2005	0.59	0.64	5,485	247	26,672	10,867	9,278	4,494	9,278	22,614	79.6	76.0	50	76.0	90.4	21.6	49.4
2010	0.54	0.52	6,509	292	24,110	14,427	12,107	6,830	12,107	24,162	76.9	71.4	50	71.4	87.8	13.3	34
2015	0.50	0.46	7,615	380	25,049	18,161	15,174	9,512	15,174	27,698	75.1	68.4	50	68.4	86.4	2.7	14.6
2020	0.49	0.42	8,648	438	24,620	21,319	17,804	11,468	17,804	30,114	74.3	67.3	50	67.3	84.4	1.1	7.6

Table S9. Inequality line incomes and percentiles of the income distribution in Europe and Central Asia

Year	Inequality measures					Inequality line incomes					Inequality line percentiles					Poverty percentile (US\$2.15 & US\$ 3.65)	
	I_G	I_{MLD}	I_{AG}	I_V	I_K	B_G	B_{MLD}	B_{AG}	B_V	B_K	p_G	p_{MLD}	p_{AG}	p_V	p_K	$p_{2.15}$	$p_{3.65}$
1950	0.40	0.30	3,058	56	7,448	8,464	7,578	5,973	7,578	11,302	70.2	63.9	50	63.9	83.4	-	-
1955	0.40	0.30	3,742	83	8,948	10,416	9,289	7,306	9,289	13,763	70.1	63.7	50	63.7	83.0	-	-
1960	0.41	0.30	4,495	117	10,529	12,528	11,095	8,732	11,095	16,359	70.3	63.5	50	63.5	82.7	-	-
1965	0.40	0.30	5,404	164	12,130	15,243	13,517	10,728	13,517	19,582	70.0	63.2	50	63.2	82.0	-	-
1970	0.39	0.29	6,449	211	12,832	18,458	16,445	13,154	16,445	22,861	69.6	63.0	50	63.0	80.2	-	-
1975	0.38	0.27	7,169	266	14,090	21,165	18,888	15,488	18,888	25,933	69.0	62.0	50	62.0	79.8	-	-
1980	0.38	0.28	8,101	334	15,873	23,908	21,058	17,295	21,058	28,995	69.2	61.6	50	61.6	79.4	-	-
1985	0.40	0.30	8,584	345	15,909	25,146	21,688	17,647	21,688	29,643	69.8	61.4	50	61.4	78.2	-	-
1990	0.43	0.35	10,034	527	22,592	27,753	23,343	17,866	23,343	34,639	71.5	63.2	50	63.2	81.0	3.2	10.5
1995	0.50	0.53	11,226	703	31,448	30,112	22,360	14,888	22,360	38,084	75.1	63.7	50	63.7	83.1	8.3	19.7
2000	0.49	0.49	12,421	793	31,362	33,299	25,272	17,269	25,272	40,952	74.6	63.5	50	63.5	81.8	9.2	21.2
2005	0.45	0.41	13,134	891	30,805	35,839	28,922	21,615	28,922	44,325	72.7	62.8	50	62.8	81.4	6.3	12.9
2010	0.43	0.36	13,225	871	28,238	36,944	30,830	23,866	30,830	44,949	71.4	62.4	50	62.4	80.2	4.2	8.2
2015	0.42	0.35	13,922	934	28,502	39,227	32,780	25,467	32,780	47,031	71.2	62.2	50	62.2	79.4	3.2	7.3
2020	0.42	0.33	13,975	1,018	30,355	39,504	33,544	26,383	33,544	48,722	70.8	62.1	50	62.1	80.8	2.4	6.2

Table S10. Inequality line incomes and percentiles of the income distribution in Latin America and the Caribbean

	Inequality measures					Inequality line incomes					Inequality line percentiles					Poverty percentile (US\$2.15 & US\$3.65)	
Year	I_G	I_{MLD}	I_{AG}	I_V	I_K	B_G	B_{MLD}	B_{AG}	B_V	B_K	p_G	p_{MLD}	p_{AG}	p_V	p_K	$p_{2.15}$	$p_{3.65}$
1950	0.58	0.65	2,778	152	31,628	6,148	4,792	2,505	4,792	20,606	79.0	71.4	50	71.4	97.3	-	-
1955	0.58	0.65	3,160	180	33,199	6,791	5,421	2,823	5,421	22,020	79.1	71.1	50	71.1	96.9	-	-
1960	0.58	0.65	3,567	195	31,817	7,581	6,144	3,247	6,144	22,053	79.0	71.7	50	71.7	96.0	-	-
1965	0.58	0.66	4,070	218	31,376	9,298	6,962	3,563	6,962	22,650	79.2	71.5	50	71.5	95.1	-	-
1970	0.59	0.66	4,787	334	40,835	10,823	8,183	4,216	8,183	28,600	79.3	71.5	50	71.5	95.8	-	-
1975	0.59	0.67	5,797	532	53,893	12,846	9,867	5,071	9,867	36,813	79.4	71.9	50	71.9	96.3	-	-
1980	0.55	0.58	6,371	430	37,335	14,287	11,528	6,559	11,528	30,195	77.6	70.5	50	70.5	93.2	15.0	29.9
1985	0.54	0.55	5,802	298	27,628	13,118	10,784	6,405	10,784	24,597	76.9	69.8	50	69.8	91.4	17.0	33
1990	0.56	0.62	6,096	469	43,349	13,131	10,813	6,085	10,813	32,488	78.2	71.6	50	71.6	94.7	16.7	31.3
1995	0.57	0.64	6,674	577	49,499	14,447	11,648	6,400	11,648	36,398	78.6	71.7	50	71.7	94.9	14.4	28.9
2000	0.57	0.64	7,204	670	53,219	15,665	12,592	6,926	12,592	39,201	78.6	71.7	50	71.7	94.9	13.5	26.7
2005	0.55	0.59	7,399	630	47,082	16,300	13,391	7,764	13,391	36,932	77.6	70.9	50	70.9	93.8	10.5	22.1
2010	0.52	0.52	7,905	638	42,213	17,910	15,124	9,427	15,124	36,230	76.1	69.7	50	69.7	92.5	6.4	14.8

2015	0.51	0.50	8,333	806	49,639	18,796	16,238	10,384	16,238	41,058	75.7	69.7	50	69.7	93.4	4.2	11
2020	0.51	0.50	7,386	580	39,924	16,810	14,535	9,449	14,535	34,497	75.4	69.3	50	69.3	92.9	4.3	10.6

Table S11. Inequality line incomes and percentiles of the income distribution in Middle East and North Africa

Year	Inequality measures					Inequality line incomes					Inequality line percentiles					Poverty percentile (US\$2.15 & US\$3.65)	
	I_G	I_{MLD}	I_{AG}	I_V	I_K	B_G	B_{MLD}	B_{AG}	B_V	B_K	p_G	p_{MLD}	p_{AG}	p_V	p_K	$p_{2.15}$	$p_{3.65}$
1950	0.56	0.58	2,160	89	23,134	4,358	3,827	2,074	3,827	15,394	78.2	74.3	50	74.3	97.2	-	-
1955	0.60	0.65	2,593	130	29,916	4,974	4,356	2,150	4,356	19,314	79.8	76.2	50	76.2	97.3	-	-
1960	0.60	0.66	3,164	164	31,042	6,317	5,293	2,613	5,293	20,814	79.9	75.2	50	75.2	96.5	-	-
1965	0.61	0.69	4,011	238	36,212	7,782	6,572	3,115	6,572	24,678	80.5	76.1	50	76.1	95.8	-	-
1970	0.63	0.75	5,480	403	46,525	10,702	8,661	3,786	8,661	31,924	81.6	76.9	50	76.9	95.3	-	-
1975	0.64	0.79	7,435	621	53,741	14,647	11,558	4,812	11,558	38,429	82.2	77.1	50	77.1	94.1	-	-
1980	0.63	0.75	8,323	842	64,216	15,093	13,115	5,648	13,115	45,223	81.7	78.6	50	78.6	94.5	-	-
1985	0.58	0.60	6,849	464	39,135	13,369	11,855	6,019	11,855	31,422	78.9	75.8	50	75.8	92.9	6.9	27.5
1990	0.57	0.58	6,155	349	32,251	11,599	10,809	5,532	10,809	26,935	78.5	76.7	50	76.7	92.2	6.1	25.7
1995	0.58	0.60	6,661	397	34,632	12,381	11,468	5,642	11,468	28,784	79.0	77.3	50	77.3	92.0	5.3	26.4
2000	0.56	0.56	7,180	449	35,308	13,505	12,725	6,518	12,725	30,379	78.2	76.8	50	76.8	91.5	3.6	19.2
2005	0.56	0.56	7,925	524	37,250	14,991	14,075	7,191	14,075	32,700	78.2	76.6	50	76.6	91.2	2.7	16.4
2010	0.54	0.50	8,302	501	32,351	16,743	15,480	8,489	15,480	31,656	76.8	74.7	50	74.7	89.0	1.8	12
2015	0.56	0.57	8,977	589	36,859	17,600	15,988	8,395	15,988	34,418	78.1	75.7	50	75.7	89.3	4.8	14.4
2020	0.55	0.55	8,438	490	31,740	17,088	15,426	8,544	15,426	31,296	77.3	74.7	50	74.7	88.3	7.5	17.9

Table S12. Inequality line incomes and percentiles of the income distribution in North America

Year	Inequality measures					Inequality line incomes					Inequality line percentiles					Poverty percentile (US\$ 2.15 & US\$ 3.65)	
	I_G	I_{MLD}	I_{AG}	I_V	I_K	B_G	B_{MLD}	B_{AG}	B_V	B_K	p_G	p_{MLD}	p_{AG}	p_V	p_K	$p_{2.15}$	$p_{3.65}$
1950	0.38	0.28	6,293	221	13,454	18,326	16,404	13,473	16,404	23,131	69.2	62.1	50	62.1	81.5	-	-
1955	0.37	0.26	6,898	243	13,025	20,933	18,649	15,683	18,649	25,161	68.5	61.1	50	61.1	79.3	-	-
1960	0.37	0.26	7,158	237	12,234	21,944	19,389	16,264	19,389	25,506	68.5	60.9	50	60.9	77.3	-	-
1965	0.36	0.24	8,320	309	13,436	25,784	22,963	19,235	22,963	29,681	68.1	61.0	50	61.0	76.5	-	-
1970	0.36	0.24	9,236	407	15,784	28,541	25,756	21,580	25,756	33,648	67.9	61.3	50	61.3	77.7	-	-
1975	0.36	0.24	10,072	469	16,703	31,209	28,081	23,506	28,081	36,433	67.9	61.3	50	61.3	77.2	-	-
1980	0.35	0.21	11,119	522	16,305	35,458	31,984	26,882	31,984	40,137	67.4	61.1	50	61.1	75.2	-	-
1985	0.37	0.24	13,032	719	20,188	40,045	35,599	29,312	35,599	45,694	68.3	61.4	50	61.4	75.8	-	-
1990	0.38	0.26	14,998	995	25,033	44,757	39,734	32,196	39,734	52,250	68.9	62.0	50	62.0	77.2	-	-
1995	0.40	0.29	16,867	1,603	37,924	46,766	42,270	32,897	42,270	61,232	70.0	64.4	50	64.4	82.3	-	-
2000	0.40	0.29	19,690	2,332	47,406	54,083	49,197	38,130	49,197	72,900	70.0	64.7	50	64.7	83.5	-	-
2005	0.40	0.29	21,517	2,941	54,940	58,839	53,525	41,654	53,525	80,996	70.1	64.7	50	64.7	84.5	-	-
2010	0.40	0.29	21,727	2,879	53,568	59,001	53,751	41,305	53,751	80,535	70.2	65.1	50	65.1	83.9	-	-
2015	0.41	0.30	23,834	3,067	53,052	64,212	57,804	43,396	57,804	84,330	70.6	65.3	50	65.3	82.1	-	-
2020	0.41	0.30	24,381	3,419	57,871	65,624	59,083	44,649	59,083	88,018	70.6	65.2	50	65.2	83.2	-	-

Table S13. Inequality line incomes and percentiles of the income distribution in South Asia

	Inequality measures					Inequality line incomes					Inequality line percentiles					Poverty percentile (US\$2.15 & US\$3.65)	
Year	I_G	I_{MLD}	I_{AG}	I_V	I_K	B_G	B_{MLD}	B_{AG}	B_V	B_K	p_G	p_{MLD}	p_{AG}	p_V	p_K	$p_{2.15}$	$p_{3.65}$
1950	0.51	0.51	490	2	2,052	1,150	963	626	963	1,989	75.4	68.2	50	68.2	90.0	-	-
1955	0.51	0.47	519	2	2,003	1,210	1,025	649	1,025	2,027	75.3	68.9	50	68.9	89.0	-	-
1960	0.48	0.41	542	2	1,967	1,269	1,122	733	1,122	2,105	74.2	68.8	50	68.8	88.3	-	-
1965	0.47	0.39	553	2	1,957	1,316	1,175	786	1,175	2,154	73.5	68.5	50	68.5	88.0	-	-
1970	0.46	0.38	610	3	2,008	1,478	1,320	896	1,320	2,323	73.1	68.2	50	68.2	87.2	-	-
1975	0.46	0.37	613	3	1,994	1,497	1,329	904	1,329	2,326	73.1	67.8	50	67.8	86.9	-	-
1980	0.48	0.41	685	4	2,700	1,586	1,418	925	1,418	2,768	74.2	69.3	50	69.3	89.4	58.1	87.2
1985	0.49	0.42	796	5	3,272	1,834	1,637	1,059	1,637	3,273	74.3	69.6	50	69.6	89.8	53.1	84.9
1990	0.47	0.38	905	6	3,262	2,146	1,934	1,282	1,934	3,565	73.4	68.9	50	68.9	88.3	49.7	83.2
1995	0.49	0.41	1,080	11	4,786	2,438	2,216	1,412	2,216	4,609	74.4	70.3	50	70.3	90.8	43.5	79.8
2000	0.50	0.44	1,315	16	6,219	2,925	2,629	1,635	2,629	5,739	75.0	70.7	50	70.7	91.4	39.9	76.9
2005	0.51	0.46	1,655	26	7,924	3,650	3,243	1,973	3,243	7,205	75.5	71.0	50	71.0	91.4	35.1	73.1
2010	0.51	0.46	2,113	48	11,549	4,581	4,125	2,486	4,125	9,900	75.6	71.5	50	71.5	92.7	26.2	65.8
2015	0.52	0.48	2,709	81	15,472	5,857	5,217	3,116	5,217	12,953	76.0	71.7	50	71.7	92.9	16.7	57.2
2020	0.52	0.48	3,049	103	17,429	6,600	5,883	3,534	5,883	14,598	75.9	71.6	50	71.6	93.0	8.5	42

Table S14. Inequality line incomes and percentiles of the income distribution in Sub-Saharan Africa

	Inequality measures					Inequality line incomes					Inequality line percentiles					Poverty percentile (US\$2.15 & US\$3.65)	
Year	I_G	I_{MLD}	I_{AG}	I_V	I_K	B_G	B_{MLD}	B_{AG}	B_V	B_K	p_G	p_{MLD}	p_{AG}	p_V	p_K	$p_{2.15}$	$p_{3.65}$
1950	0.68	0.93	1,494	94	42,477	2,629	2,204	885	2,204	23,443	83.9	80.1	50	80.1	99.1	-	-
1955	0.68	0.93	1,683	118	47,516	2,973	2,481	996	2,481	26,239	83.9	80.0	50	80.0	99.1	-	-
1960	0.68	0.94	1,781	129	49,435	3,163	2,618	1,029	2,618	27,335	84.0	79.9	50	79.9	99.1	-	-
1965	0.69	0.96	2,033	164	55,441	3,628	2,958	1,128	2,958	30,678	84.4	80.1	50	80.1	99.1	-	-
1970	0.69	0.97	2,265	192	58,610	4,147	3,284	1,236	3,284	32,589	84.5	79.7	50	79.7	99.0	-	-
1975	0.69	0.98	2,327	192	56,819	4,430	3,380	1,271	3,380	31,789	84.4	78.7	50	78.7	99.0	-	-
1980	0.69	1.00	2,341	192	56,778	4,574	3,384	1,242	3,384	31,773	84.6	78.4	50	78.4	99.0	-	-
1985	0.69	1.00	2,098	165	54,461	3,970	3,028	1,130	3,028	30,259	84.6	78.9	50	78.9	99.0	-	-
1990	0.70	1.02	2,087	158	52,842	4,000	2,994	1,086	2,994	29,415	84.9	79.0	50	79.0	99.0	53.3	74.1
1995	0.70	1.01	1,889	129	47,609	3,554	2,706	979	2,706	26,510	84.9	79.3	50	79.3	99.0	58.0	77.7
2000	0.68	0.94	1,910	126	44,797	3,608	2,802	1,081	2,802	25,200	84.1	78.5	50	78.5	98.9	55.8	77.5
2005	0.67	0.92	2,140	231	72,780	4,125	3,177	1,275	3,177	39,567	83.7	77.5	50	77.5	99.3	48.7	73.7
2010	0.66	0.88	2,396	202	55,520	4,767	3,632	1,523	3,632	31,392	83.0	76.3	50	76.3	99.0	42.1	69
2015	0.64	0.83	2,565	146	36,337	5,221	4,005	1,803	4,005	22,173	82.0	75.3	50	75.3	97.9	38.0	65.6
2020	0.62	0.78	2,373	115	30,133	4,814	3,811	1,847	3,811	18,877	81.1	74.9	50	74.9	97.6	35.1	62.4

Table S15. Inequality line incomes and percentiles of the income distribution in High Income Countries

Year	Inequality measures					Inequality line incomes					Inequality line percentiles					Poverty percentile (US\$2.15 & US\$3.65)	
	I_G	I_{MLD}	I_{AG}	I_V	I_K	B_G	B_{MLD}	B_{AG}	B_V	B_K	p_G	p_{MLD}	p_{AG}	p_V	p_K	$p_{2.15}$	$p_{3.65}$
1950	0.46	0.40	4,576	127	12,787	11,920	9,955	7,073	9,955	16,349	73.0	65.0	50	65.0	84.5	-	-
1955	0.44	0.37	5,297	160	13,373	14,286	11,999	8,868	11,999	18,685	72.1	64.0	50	64.0	82.9	-	-
1960	0.43	0.35	5,869	186	13,558	16,179	13,750	10,529	13,750	20,529	71.3	63.2	50	63.2	81.7	-	-
1965	0.41	0.33	6,923	254	15,135	19,310	16,792	13,032	16,792	24,360	70.6	63.4	50	63.4	81.1	-	-
1970	0.40	0.30	8,079	341	16,775	22,997	20,311	16,170	20,311	28,699	69.9	62.9	50	62.9	80.8	-	-
1975	0.39	0.28	8,853	419	18,225	25,503	22,988	18,556	22,988	32,101	69.3	63.0	50	63.0	81.0	-	-
1980	0.38	0.26	9,984	529	19,991	29,317	26,483	21,608	26,483	36,478	68.9	62.7	50	62.7	80.4	0.8	1.8
1985	0.38	0.26	10,841	549	19,211	31,981	28,593	23,251	28,593	38,199	69.0	62.3	50	62.3	78.3	0.8	1.7
1990	0.38	0.26	12,353	713	21,940	36,299	32,490	26,305	32,490	43,461	69.0	62.4	50	62.4	78.3	0.6	1.3
1995	0.39	0.28	13,686	994	28,475	38,922	34,907	27,756	34,907	49,145	69.6	63.4	50	63.4	81.1	0.7	1.6
2000	0.39	0.28	15,633	1,391	34,856	43,929	39,909	31,471	39,909	57,337	69.6	64.1	50	64.1	82.2	0.7	1.7
2005	0.39	0.27	16,893	1,691	38,928	47,418	43,432	34,250	43,432	62,896	69.4	64.3	50	64.3	82.9	0.6	1.2
2010	0.38	0.26	17,058	1,685	37,774	48,393	44,598	35,297	44,598	63,485	69.1	64.3	50	64.3	82.3	0.5	0.9
2015	0.38	0.26	18,344	1,862	39,051	51,448	47,678	37,353	47,678	67,203	69.2	64.8	50	64.8	81.9	0.8	1.1
2020	0.38	0.26	18,500	1,997	41,388	51,837	48,256	37,943	48,256	68,950	69.2	64.9	50	64.9	82.7	0.6	0.9

Table S16. Inequality line incomes and percentiles of the income distribution in Low Income Countries

Year	Inequality measures					Inequality line incomes					Inequality line percentiles					Poverty percentile (US\$2.15 & US\$3.65)	
	I_G	I_{MLD}	I_{AG}	I_V	I_K	B_G	B_{MLD}	B_{AG}	B_V	B_K	p_G	p_{MLD}	p_{AG}	p_V	p_K	$p_{2.15}$	$p_{3.65}$
1950	0.61	0.75	801	10	7,526	1,719	1,313	647	1,313	5,076	80.5	73.1	50	73.1	96.1	-	-
1955	0.62	0.77	935	13	8,888	1,988	1,511	722	1,511	5,956	80.9	73.9	50	73.9	96.0	-	-
1960	0.62	0.77	990	15	9,296	2,119	1,608	777	1,608	6,256	80.8	73.6	50	73.6	96.0	-	-
1965	0.61	0.75	1,039	16	9,617	2,193	1,691	810	1,691	6,499	80.7	74.1	50	74.1	95.8	-	-
1970	0.61	0.74	1,099	19	10,492	2,297	1,796	862	1,796	7,042	80.6	74.3	50	74.3	96.0	-	-
1975	0.64	0.82	1,245	22	11,323	2,538	1,942	831	1,942	7,604	82.0	76.1	50	76.1	95.3	-	-
1980	0.66	0.87	1,304	24	11,917	2,621	1,986	799	1,986	7,944	82.8	77.2	50	77.2	95.2	-	-
1985	0.67	0.90	1,259	21	11,268	2,559	1,892	740	1,892	7,526	83.3	77.3	50	77.3	95.0	-	-
1990	0.66	0.88	1,168	19	10,635	2,376	1,771	704	1,771	7,089	83.0	77.2	50	77.2	95.1	64.3	81.9
1995	0.68	0.94	1,141	19	11,464	2,257	1,672	599	1,672	7,404	84.1	78.7	50	78.7	95.4	62.7	80.8
2000	0.66	0.84	1,054	15	9,194	2,168	1,608	620	1,608	6,205	82.8	77.4	50	77.4	94.8	58.5	79.8
2005	0.63	0.76	1,094	16	8,973	2,275	1,737	738	1,737	6,223	81.5	76.0	50	76.0	94.7	52.5	75.6
2010	0.61	0.71	1,207	20	10,081	2,549	1,984	924	1,984	7,025	80.4	74.8	50	74.8	95.0	47.2	72.4
2015	0.57	0.61	1,125	24	11,877	2,375	1,982	1,093	1,982	7,920	78.4	72.5	50	72.5	96.9	45.1	73.3
2020	0.57	0.63	1,174	24	11,895	2,475	2,059	1,141	2,059	8,006	78.5	72.5	50	72.5	96.7	43.9	70.9

Table S17. Inequality line incomes and percentiles of the income distribution in Lower-Middle Income Countries

Year	Inequality measures					Inequality line incomes					Inequality line percentiles					Poverty percentile (US\$2.15 & US\$3.65)	
	I_G	I_{MLD}	I_{AG}	I_V	I_K	B_G	B_{MLD}	B_{AG}	B_V	B_K	p_G	p_{MLD}	p_{AG}	p_V	p_K	$p_{2.15}$	$p_{3.65}$
1950	0.58	0.65	925	12	7,247	1,905	1,600	846	1,600	5,223	78.9	74.4	50	74.4	94.1	-	-
1955	0.58	0.63	1,016	14	7,931	2,097	1,753	918	1,753	5,719	79.0	74.3	50	74.3	94.0	-	-
1960	0.58	0.62	1,140	17	8,589	2,269	1,962	995	1,962	6,256	79.1	75.3	50	75.3	93.6	-	-
1965	0.59	0.63	1,268	20	9,438	2,473	2,155	1,061	2,155	6,874	79.4	76.0	50	76.0	93.5	-	-
1970	0.60	0.65	1,488	28	11,048	2,864	2,490	1,194	2,490	8,013	79.9	76.5	50	76.5	93.5	-	-
1975	0.61	0.69	1,676	34	12,537	3,231	2,744	1,270	2,744	9,013	80.5	76.5	50	76.5	93.6	-	-
1980	0.60	0.67	1,716	30	10,575	3,583	2,860	1,360	2,860	8,148	80.0	74.6	50	74.6	92.6	51.7	76.6
1985	0.59	0.64	1,780	33	11,037	3,645	3,021	1,501	3,021	8,539	79.5	74.7	50	74.7	92.8	48.6	75.3
1990	0.56	0.58	1,814	31	9,757	3,867	3,228	1,739	3,228	8,106	78.1	72.5	50	72.5	92.2	45.3	73.6
1995	0.54	0.53	1,765	30	9,321	3,955	3,265	1,856	3,265	7,926	77.0	70.5	50	70.5	92.2	41.3	72.1
2000	0.53	0.50	1,890	34	9,466	4,312	3,594	2,135	3,594	8,327	76.3	69.8	50	69.8	91.8	37.9	69.9
2005	0.52	0.50	2,276	46	10,617	5,175	4,335	2,594	4,335	9,644	76.2	70.0	50	70.0	91.1	31.0	63.7
2010	0.52	0.49	2,736	65	12,368	6,245	5,289	3,204	5,289	11,473	75.9	69.8	50	69.8	90.7	23.0	55.4
2015	0.51	0.48	3,183	99	15,831	7,297	6,262	3,941	6,262	14,178	75.4	69.3	50	69.3	91.9	15.7	47.5
2020	0.50	0.47	3,446	108	15,859	7,954	6,841	4,338	6,841	14,771	75.2	69.1	50	69.1	91.2	10.2	37.3

Table S18. Inequality line incomes and percentiles of the income distribution in Upper-Middle Income Countries

Year	Inequality measures					Inequality line incomes					Inequality line percentiles					Poverty percentile (US\$2.15 & US\$3.65)	
	I_G	I_{MLD}	I_{AG}	I_V	I_K	B_G	B_{MLD}	B_{AG}	B_V	B_K	p_G	p_{MLD}	p_{AG}	p_V	p_K	$p_{2.15}$	$p_{3.65}$
1950	0.72	1.28	1,587	35	16,135	4,882	2,193	496	2,193	10,261	86.2	74.3	50	74.3	96.3	-	
1955	0.71	1.14	1,858	47	17,861	5,440	2,632	679	2,632	11,562	85.3	73.9	50	73.9	96.0	-	
1960	0.71	1.15	2,158	59	19,390	6,466	3,034	707	3,034	12,729	85.6	74.2	50	74.2	95.3	-	
1965	0.71	1.10	2,585	77	21,057	7,803	3,650	852	3,650	14,179	85.4	74.8	50	74.8	94.0	-	
1970	0.72	1.14	3,122	116	26,675	9,606	4,352	945	4,352	17,689	85.9	75.4	50	75.4	94.2	-	
1975	0.72	1.16	3,715	173	33,696	11,481	5,140	1,049	5,140	21,988	86.1	75.5	50	75.5	94.8	-	
1980	0.70	1.06	4,151	181	30,667	12,339	5,888	1,282	5,888	21,221	85.2	74.7	50	74.7	93.0	59.2	69.3
1985	0.67	0.88	4,009	151	25,142	10,718	6,017	1,719	6,017	18,587	83.3	74.6	50	74.6	91.5	49.9	67.6
1990	0.67	0.89	4,071	222	36,532	10,001	6,077	2,001	6,077	24,343	83.5	75.5	50	75.5	95.3	47.1	64.8
1995	0.61	0.68	3,753	242	39,376	7,740	6,157	2,779	6,157	25,845	80.5	75.3	50	75.3	96.6	36.0	58.2
2000	0.57	0.60	4,159	229	31,527	8,934	7,263	3,752	7,263	23,027	78.6	73.0	50	73.0	94.9	28.9	50.3
2005	0.54	0.54	5,014	277	29,897	11,293	9,265	5,351	9,265	24,213	77.1	70.4	50	70.4	93.0	15.8	35.7
2010	0.49	0.45	6,049	306	24,896	14,601	12,302	8,094	12,302	24,750	74.6	67.3	50	67.3	89.4	9.8	23.7
2015	0.46	0.40	6,982	363	23,952	17,687	15,137	10,746	15,137	27,113	73.1	66.0	50	66.0	87.4	2.0	9.1
2020	0.46	0.39	7,851	395	22,999	20,060	17,167	12,160	17,167	28,666	72.9	65.9	50	65.9	85.3	1.5	5.1